

GE Healthcare

Voluson *i*

World's first compact
Volume Ultrasound system



Think

big





The imaging performance of a full-sized Voluson ultrasound system is now available in a powerful 11-pound package.

Think you need a 300-pound system to get high-quality volumetric imaging?

Think again.

Sure, the first time you see our new Voluson® *i*, there'll be some disbelief. That's natural. When any product is the

VO

first of its kind, there's bound to be skepticism. And, since the Voluson *i* is the world's first and only compact volume ultrasound system, we expect the doubters.

In fact, even after you've seen its incredible image quality and volume capabilities, you may still have a hard time believing it.

Stunning image clarity. Real-time volumetric images.
Advanced diagnostic capabilities online and offline.
Workflow efficiencies. Total portability. And that's just
a tiny peek.

lume

Who would think the industry-leading
technology of our premium Voluson
console system – one of the most trusted
systems for women's healthcare – could be
condensed into a portable laptop version?

The innovative Voluson *i*. It's a big deal.

More ultrasound data. Better informed decisions. The more you see, the more you know. And that speaks volumes for your diagnostic confidence.

Size isn't everything.

The compact Voluson *i* comes loaded – with Volume Ultrasound.

Volume Ultrasound, enabled by 3D and 4D technologies, allows you to acquire, navigate, optimize and analyze volumetric images in real-time.

Acquire raw volumetric data that can be analyzed in different planes after your patient leaves. So you reconstruct the exam instead of rescanning the patient. Not to mention, save time. Yours and your patients'.

And by integrating Volume Ultrasound with our sophisticated image optimization tools, you clearly see the smallest details from any plane with unprecedented clarity, much like a CT or MR image. Which – surprise, surprise – makes your diagnostic confidence soar.

Small wonder.

Volume is.

Excellent 2D Imaging is necessary for superior volume imaging. And the Voluson *i* will not fall short of your expectations. Complete with Speckle Reduction Imaging (SRI) for improved contrast resolution and border detection and CrossXBeam^{CRI} (CRI) for tissue and border differentiation, you no longer have to make the trade-off between size and quality.

Superior Volume Ultrasound is what you expect from the Voluson and what you get from the Voluson *i*. You can acquire volumes faster than ever before and manipulate with Tomographic Ultrasound Imaging (TUI) which provides a simultaneous view of multiple slices of your volume data. The first ever compact ultrasound with true Volume Ultrasound capabilities, the Voluson *i* is truly a small wonder.

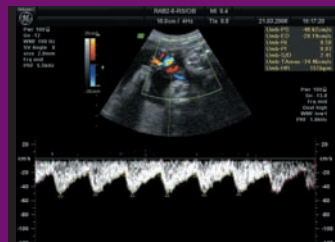




Technology of Voluson *i*



Fetal aortic arch with SRI high



Umbilical artery Doppler wave form



2D intracranial anatomy with SRI low

A passion for innovation. 3000 dedicated employees. The resources of a global leader. It's amazing what the combination has led to. Then again, maybe it isn't such a surprise.

Ultrasound is our baby.

When it comes to ultrasound, perhaps we're a little over the top.

But that's how it is when you're an impassioned leader. Our commitment to ultrasound is so strong, we created a dedicated business unit – to focus solely on developing new ultrasound technologies.

In a relatively short span, we have produced a continuous stream of breakthroughs that have redefined ultrasound. Redefined the standards for image quality. Accelerated the introduction of new applications. And increased clinical efficiency for users worldwide.

This year, with the introduction of miniaturized technology and our Voluson *i* system, we've made it easier for you to make pivotal patient care decisions anywhere.

You're devoted to providing the best patient care. GE is committed to developing innovative technologies to help you accomplish that.

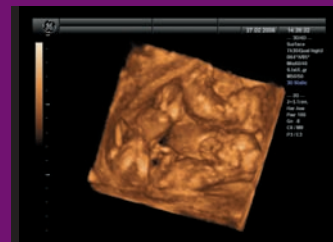
Small world.



3D rendering of fetal feet



Surface rendering of fetus



First trimester triplet gestation

When you partner with the world's #1 ultrasound company, help is never far. At GE, we deliver more than clear ultrasound images. We uphold a vision of clear support.

We've got your back.

Backed by an in-house team of ultrasound specialists.

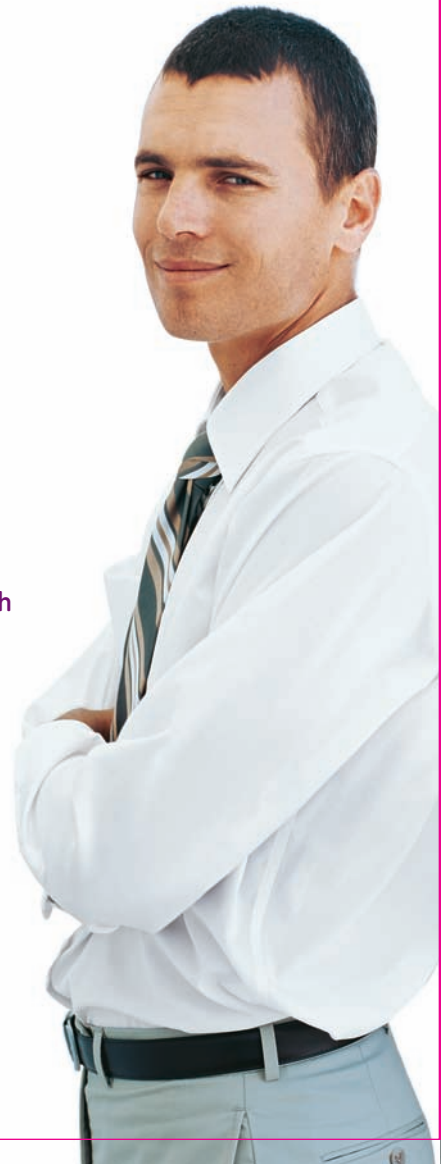
Get 24/7 assistance from one of the best-trained and most widely-deployed ultrasound service teams in the industry. Plus remote applications support from GE's OnLine Center.

Backed by in-depth training at the GE Healthcare Institute.

Our dedicated educational facility offers instructor-led, hands-on training. On-site applications training and self-guided tutorials extend your training options.

Backed by clinical research and development.

Thousands of articles and studies support the clinical efficacy of our industry-leading volume imaging technologies.





**Backed by the
GE Continuum.**

Our commitment to annual breakthroughs and a clear upgrade path will keep you at the forefront of technology.

**Backed by the financial
resources of a world leader.**

Choose from a wide range of financing options to make ownership of a new Voluson *i* a reality for your clinical practice.

**Backed by a global
network of Voluson users.**

As an owner of a Voluson *i*, you are eligible for membership in a worldwide organization exclusive to Voluson users. Learn. Network. Share.
www.volusonclub.net





As the leader in women's healthcare, GE has a dedicated ultrasound offering to see a woman through every stage of her life. From preconception to birth and post-menopause. Complete diagnostic coverage. Innovative technology.

We're there for her.

©2006 General Electric Company – All rights reserved.

General Electric Company reserves the right to make changes in specifications and features shown herein, or discontinue the product described at any time without notice or obligation.

GE, GE Monogram, Voluson® and CrossXBeam^{CR}™ are trademarks of General Electric Company.

GE Medical Systems Ultrasound & Primary Care Diagnostics, LLC, a subsidiary of General Electric company, doing business as GE Healthcare.

Healthcare Re-imagined

GE is dedicated to helping you transform healthcare delivery by driving critical breakthroughs in biology and technology. Our expertise in medical imaging and information technologies, medical diagnostics, patient monitoring systems, drug discovery, and biopharmaceutical manufacturing technologies is enabling healthcare professionals around the world to discover new ways to predict, diagnose and treat disease earlier. We call this model of care “Early Health.” The goal: to help clinicians detect disease earlier, access more information and intervene earlier with more targeted treatments, so they can help their patients live their lives to the fullest. Re-think, Re-discover, Re-invent, Re-imagine.

GE Healthcare
9900 Innovation Drive
Wauwatosa, WI 53226
U.S.A.

www.gehealthcare.com



imagination at work