

GE Healthcare

# LOGIQ S7



Amazing versatility.



# Leading with versatility

> With the growing use of ultrasound, healthcare providers are challenged to image patients of **various ages and sizes**, and encompass **a wide range of clinical areas** including abdominal, vascular, cardiac, musculoskeletal, OB/GYN, and small parts imaging.

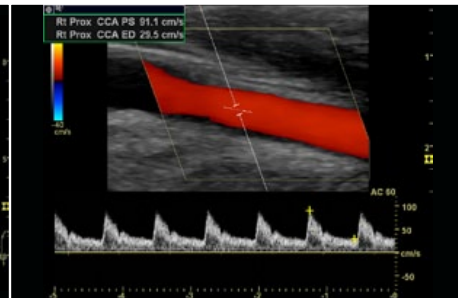
It takes a special ultrasound system to help meet those demands – and the LOGIQ\* S7<sup>1</sup> system is equipped for the challenge. This mobile, shared-service ultrasound system is designed specifically to provide:

- Consistent quality performance to help enhance diagnostic confidence across applications
- User-sensitive design to help increase exam speed, as well as comfort and productivity
- Intuitive tools to enable high utilization across multiple applications
- All at an affordable price that helps meet expectations

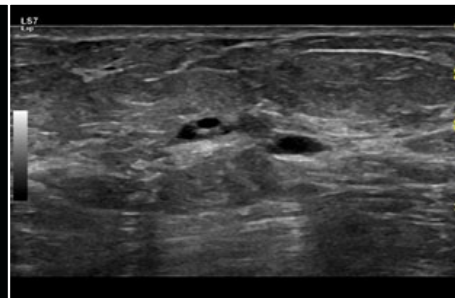
**LOGIQ S7 is well equipped for a variety of applications and ready to take on both routine and non-traditional challenges.**



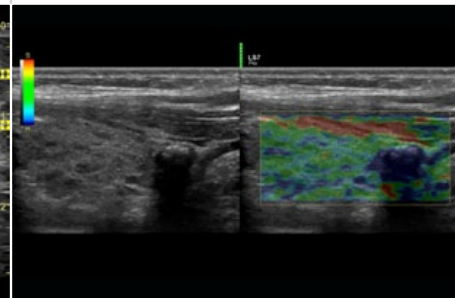
Contrast resolution of liver with the C1-5-D.



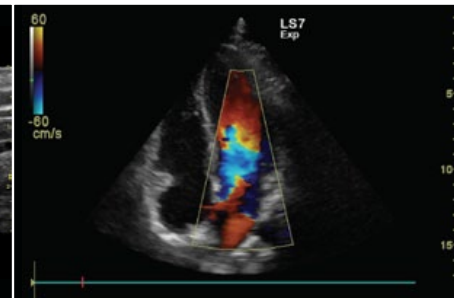
Common carotid artery Doppler with the 9L-D.



Definition of multiple breast cysts with the matrix array probe, ML6-15.



Thyroid Elastography using the 11L-D. Elastography is available on linear and curved transducers.



Apical four chamber view of the heart with the 3Sp-D.



Detail in this rendered fetal face using the RAB4-8-D to help enhance diagnostic confidence.



## Smart design

The LOGIQ S7 user centric design can help reduce operator fatigue and risk of injury, while enhancing comfort.

- **System adjustability** – LOGIQ S7 can be modified according to operator height and preference: the control panel swivels and moves up/down<sup>2</sup> independently from the monitor for easy positioning, and the 19" LCD monitor on an articulated arm<sup>3</sup> helps users attain an excellent viewing angle.
- **Intuitive interface** – User-friendly keys, backlit controls and smart keys help promote peak performance. The 7" user-selectable touchscreen helps facilitate uninterrupted scanning.
- **Scan Assistant** – This customizable scanning program helps decrease keystrokes, shorten exam time and increase exam consistency.<sup>4</sup>

## Sensational performance

LOGIQ S7 is engineered to provide quality and speed across applications.

- **S-Agile architecture** – Advanced LOGIQ architecture helps deliver consistently clear images with minimal keystrokes.
- **Advanced transducers** – Powerful LOGIQ E-Series transducer technology enables excellent images to be acquired quickly.
- **Image optimization tools** – LOGIQ S7 is packed full of tools to help enhance image quality such as contrast resolution and border definition.

> **A true workhorse.** Its sleek, lightweight design incorporates powerful technologies while enhancing workflow and user experience.

## Specialized capabilities

Beyond its ability to scan a wide variety of body types, the LOGIQ S7 offers tools that help provide additional exam information, as well as enhance productivity and diagnostic confidence. Dedicated packages help clinicians perform efficient, specialized exams.

- **Advanced tools** help provide innovative, in-depth care.
  - > **Specialized features** include B-Flow, Elastography with semi-Quantification,<sup>5</sup> Flow Quantification, Contrast Imaging, B-Steer+, Volume Imaging and Multi-Modality Imaging Display.
  - > **Specialized transducers** include convex, linear, phased array, matrix array and 3D/4D volume convex.
- **Raw Data** – This feature captures data early in the image processing chain which affords clinicians the freedom to perform image adjustments, measurements, and other functions after the exam is completed.

## > **ecomagination**

LOGIQ S7 is among the most energy efficient in the industry. That means with every image you'll be using less energy, saving money, and contributing to a better environment. It's part of the GE commitment to invest in innovative solutions to environmental challenges, while empowering you with advanced tools for healthcare delivery. For more details please visit [www.ecomagination.com](http://www.ecomagination.com).

### **About GE Healthcare:**

GE Healthcare provides transformational medical technologies and services that are shaping a new age of patient care. Our broad expertise in medical imaging and information technologies, medical diagnostics, patient monitoring systems, drug discovery, biopharmaceutical manufacturing technologies, performance improvement and performance solutions services help our customers to deliver better care to more people around the world at a lower cost. In addition, we partner with healthcare leaders, striving to leverage the global policy change necessary to implement a successful shift to sustainable healthcare systems.

Our "healthymagination" vision for the future invites the world to join us on our journey as we continuously develop innovations focused on reducing costs, increasing access and improving quality around the world. Headquartered in the United Kingdom, GE Healthcare is a unit of General Electric Company (NYSE: GE). Worldwide, GE Healthcare employees are committed to serving healthcare professionals and their patients in more than 100 countries. For more information about GE Healthcare, visit our website at [www.gehealthcare.com](http://www.gehealthcare.com).

GE Healthcare  
9900 Innovation Drive  
Wauwatosa, WI 53226  
U.S.A.

[www.gehealthcare.com](http://www.gehealthcare.com)



### **Responsive service and support**

- **Connectivity** – Robust DICOM connectivity that is compatible with many imaging IT solutions including GE Healthcare's ViewPoint\* 6 reporting and image management solution.
- **Education** – Access training and support to help achieve the most from the system.
- **Service contract solutions** – Choose from basic service to comprehensive support with parts and labor included.
- **Transducer protection** – Nanosonics' Trophon\*\* EPR disinfection system helps provide a high level and efficient method of transducer cleaning.
- **Customer care** – Join the LOGIQClub user community ([www.logiqclub.net](http://www.logiqclub.net)). Members become part of a dynamic community of clinicians, and have the opportunity to share experiences and best practices.

**<sup>1</sup>The LOGIQ S7 described in this brochure has not been cleared by the U.S. FDA and is not available for promotion or sale in the United States.**

<sup>2</sup> Only available on LOGIQ S7 Expert

<sup>3</sup> Option on LOGIQ S7 Pro

<sup>4</sup> Independent study performed by an independent sonographer

<sup>5</sup> Elastography with semi-Quantification described in this brochure has not been cleared by the U.S. FDA and is not available for promotion or sale in the United States.

\* Trademark of General Electric Company.

\*\* Trophon is a registered trademark of Nanosonics.

©2012 General Electric Company – All rights reserved.

General Electric Company reserves the right to make changes in specifications and features shown herein, or discontinue the product described at any time without notice or obligation. Contact your GE Representative for the most current information.

GE and GE Monogram are trademarks of General Electric Company.

GE Medical Systems Ultrasound & Primary Care Diagnostics, LLC, a General Electric company, doing business as GE Healthcare.