

GE Healthcare

# LOGIQ *e*

Compact ultrasound system



Cutting-edge ultrasound innovation. Within the reach of everyone, everywhere. A compact system that raises the bar on image quality. And makes the power of leadership LOGIQ technology available to all clinicians.

# This is huge.

Good things come in small packages.

And in this case, they come in a ten-pound, miniaturized system that delivers large-scale functionality and greater diagnostic confidence.

Introducing the LOGIQ *e*, the newest member of our LOGIQ™ family of ultrasound systems that will open your eyes to the enormous possibilities of compact ultrasound.

So what good things come in the LOGIQ *e*?

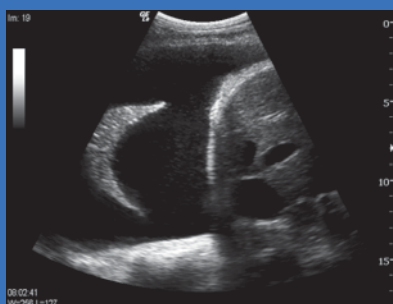
For starters, best-in-class image quality.

Comprehensive imaging capabilities, including diagnostic and image-guided procedures. On-board image storage.

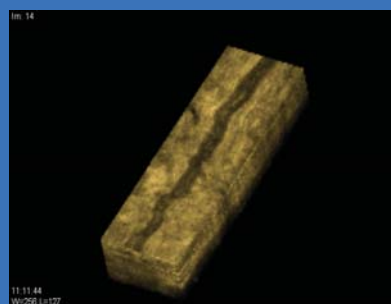
Time-saving features for emergency situations. Everything you need, in an easy-to-use package that fits in your hands and goes anywhere.

With the LOGIQ *e*, you get the diagnostic performance you require, at a price you can afford – which makes it a very good fit indeed.





Right collapsed lung with effusion. 4C-RS transducer with harmonic imaging.



3D rendering of greater saphenous vein, post closure. 12L-RS transducer utilizing ultra-high frequency.



Color Doppler demonstrating recanalization of the para umbilical vein. 8L-RS transducer with virtual convex.

# The big picture.

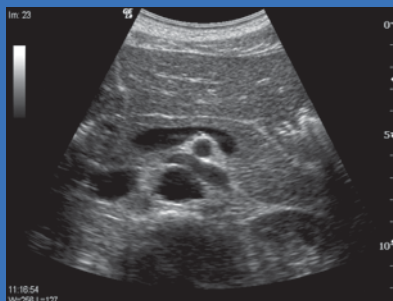
It's seeing the tiniest anatomy clearly.  
Making tough diagnoses accurately.  
And reaching critical decisions confidently.  
That's important – and in no small way.

With its unprecedented image quality, the LOGIQ *e* is capable of extending your capabilities beyond diagnostic exams and general imaging to advanced interventional guidance.

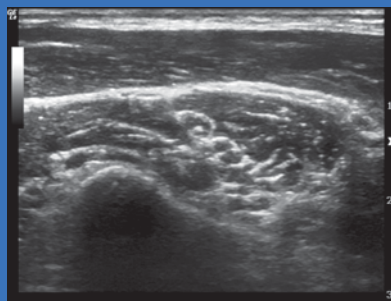
Our commitment to annual breakthroughs has resulted in a compact system with the image quality and optimization tools of a much larger system.

Features like CrossXBeam™, Coded Harmonics, Automatic Image Optimization, Easy3D and LOGIQView boost your diagnostic confidence for all your diverse applications – and help you provide better patient care.

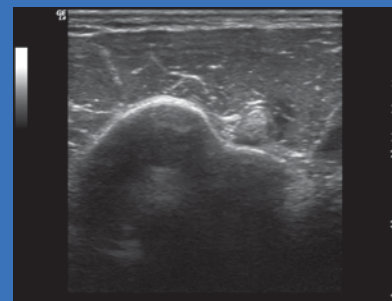
And ultimately, that's what really matters.



Coded Harmonic Imaging of normal abdominal vasculature, using the 4C-RS transducer.



Brachial plexus interscalene nerve. 12L-RS transducer with Coded Harmonics and CrossXBeam compounding.



Subluxating biceps tendon. 12L-RS transducer with Coded Harmonics and CrossXBeam compounding.



# A small way to increase productivity.

The LOGIQ *e* is a prime example of how less can be more.

To begin with, its small size allows you to perform diagnostic exams in more places, like cramped exam rooms, ambulances and sports medicine clinics.

Its raw data acquisitions and high-performance imaging capabilities mean

less time is spent getting more diagnostic information. More exams can be performed because post-processing can take place after your patients leave. So there's less re-scanning. More productivity.

And, the LOGIQ *e* is ergonomically designed to be fast and easy to use – even for less experienced operators. With a fast, 20-second boot up and single-hand probe

connections, the LOGIQ *e* is ready to scan when seconds count. Even image archiving is quick with on-board patient data management and wireless capabilities.

To sum it up, the LOGIQ *e* delivers the power and productivity of a full-sized system in a laptop size.

---

pocket

©2006 General Electric Company – All rights reserved.

General Electric Company reserves the right to make changes in specifications and features shown herein, or discontinue the product described at any time without notice or obligation.

GE, GE Monogram, LOGIQ™ and CrossXBeam™ are trademarks of General Electric Company.

GE Medical Systems Ultrasound & Primary Care Diagnostics, LLC, a subsidiary of General Electric Company, doing business as GE Healthcare.

## Healthcare Re-imagined

GE is dedicated to helping you transform healthcare delivery by driving critical breakthroughs in biology and technology. Our expertise in medical imaging and information technologies, medical diagnostics, patient monitoring systems, drug discovery, and biopharmaceutical manufacturing technologies is enabling healthcare professionals around the world to discover new ways to predict, diagnose and treat disease earlier. We call this model of care “Early Health.” The goal: to help clinicians detect disease earlier, access more information and intervene earlier with more targeted treatments, so they can help their patients live their lives to the fullest. Re-think, Re-discover, Re-invent, Re-imagine.

GE Healthcare  
9900 Innovation Drive  
Wauwatosa, WI 53226  
U.S.A.

[www.gehealthcare.com](http://www.gehealthcare.com)



imagination at work